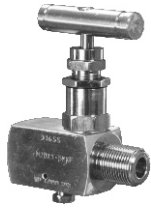


Fitting accessories - Valves



Needle valve VM-1

Material 316ss
Medium temperature, working pressure – according to the graph on page III/ 7
Ordering code:

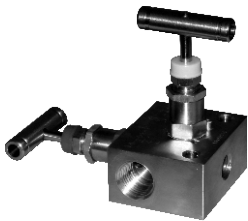
- Valve VM-1/M** (input M20×1.5 M, output M20×1.5 F, Teflon packing)
- Valve VM-1/G** (input G1/2" M, output G1/2" F, Teflon packing)
- Valve VM-1/graphite** (input M20×1.5 M, output M20×1.5 F, Graphite packing)
- Valve VM-1 oxygen** (valve designed for contact with oxygen; input M20×1.5 M, output M20×1.5 F, Teflon packing)



Needle valve VM-1-R/R

Material 316ss
Medium temperature, working pressure – according to the graph on page IV/ 3
Input 1/2NPT F, output 1/2NPT F, Graphite packing, no vent port
Ordering code:

- Valve VM-1-R/R/**_____
- 1 – Set of weldable stainless steel connectors (316ss)
 - 2 – Set of weldable steel connectors (K11562)
 - 3 – Set of connectors with Ø12 clamping ring
 - 4 – Set of connectors with Ø14 clamping ring



2-Valve Manifold VM-2

Material 316ss
Medium temperature, working pressure – according to the graph on page IV/ 3
Input 1/2NPT F, output 1/2NPT F, Teflon packing, vent port ¼ NPT F
Ordering code:

- Valve VM-2-R/R/**_____
- Valve VM-1-R/R/**_____
- 1 – Set of weldable stainless steel connectors (316ss)
 - 2 – Set of weldable steel connectors (K11562)
 - 3 – Set of connectors with Ø12 clamping ring
 - 4 – Set of connectors with Ø14 clamping ring

Option
.../NACE - NACE MR-01-75 comply



2-Valve Manifold VM-2-RM

Material 316ss
Medium temperature, working pressure – according to the graph on page IV/ 3
Input 1/2NPT F, output 1/2NPT F, Teflon packing, vent port ¼ NPT F
Ordering code:

- Valve VM-2-RM/M** (input M20x1.5 M, output M20x1.5 F, Teflon packing, vent port ¼ NPT F)
- Valve VM-2-RM/G** (input G1/2" M, output G1/2" F, Teflon packing, vent port ¼ NPT F)
- Valve VM-2-RM/1/2NPT** (input 1/2"NPT M, output 1/2"NPT F, Teflon packing, vent port ¼ NPT F)

Option:
.../NACE - NACE MR-01-75 comply

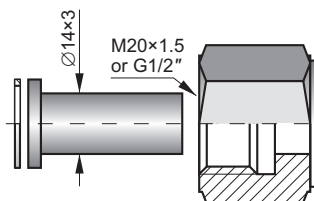


Ball valve

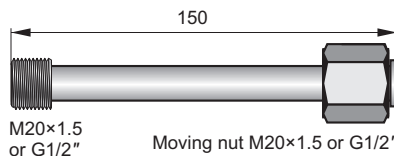
Material – H17N14M2 (316 ss)
Medium temperature - 80°C
Max pressure - 100 bar
Input, output process connection: 1/2NPT F

Ordering code:
Valve VM-1/B

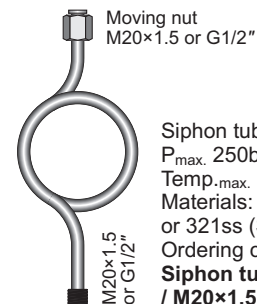
Transmission tubes



Connector to weld
Materials: 15HM – (SO) or 316Lss (S)
Ordering code
RedSpaw – S or SO / M20×1.5 or G1/2"



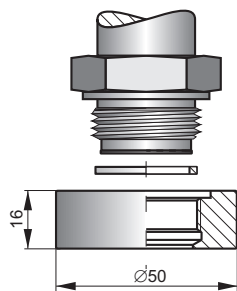
Impulse line
P_{max.} 100bar
Materials: R35 – (SO) or 321ss (S)
Ordering code
Impulse line – S or SO / M20×1.5 or G1/2"



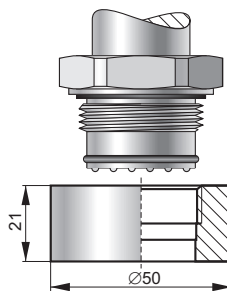
Moving nut
M20×1.5 or G1/2"

Siphon tube
P_{max.} 250bar
Temp_{D.max.} 300°C
Materials: R35 – (SO)
or 321ss (S)
Ordering code
Siphon tube – S or SO / M20×1.5 or G1/2"

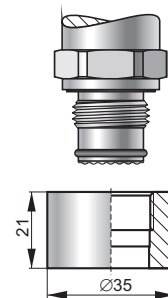
Fitting sockets



Socket with M30×2 thread for fitting transmitters with a CM30×2 process connection
Material – 316Lss
Sealing – teflon
Ordering code **Socket CM30×2**

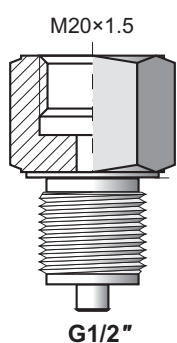


Socket with G1" thread for fitting transmitters with a CG1 process connection
Material – 316Lss
Sealing – teflon
Ordering code **Socket CG1**



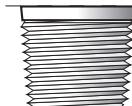
Socket with G1/2" thread for fitting transmitters with a CG1/2 process connection
Material – 316Lss
Sealing – teflon
Ordering code **Socket CG1/2**

Adapters



Material – 316Lss (S)
Ordering code: **Red**

Dimension of male thread



R1/2"



1/4NPT



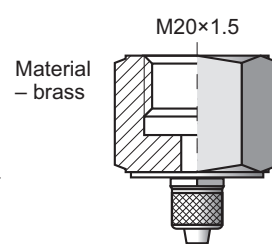
M12×1.5



G1/4"

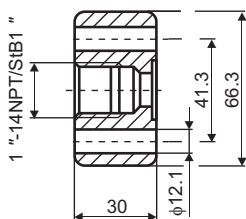
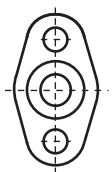


1/2"NPT F
1/4"NPT F



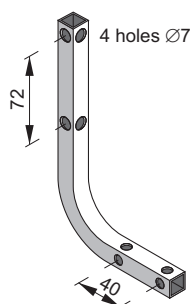
Material – brass

Ordering code:
RedØ6 – M

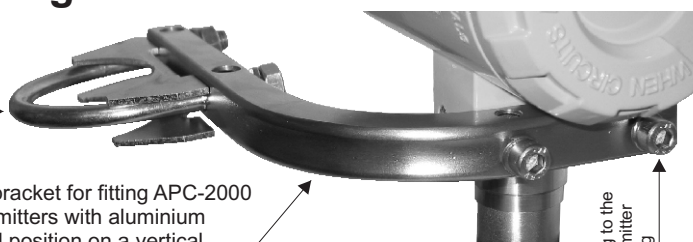


Adapter for differential pressure transmitters with C type process connection
Material – 316Lss
Ordering code: **Red-dP/1/2" NPT**

Mounting brackets



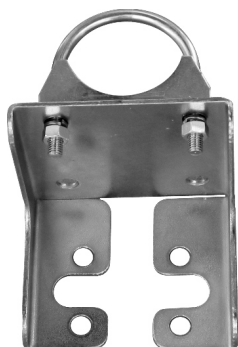
Clasp for fitting on a pipe



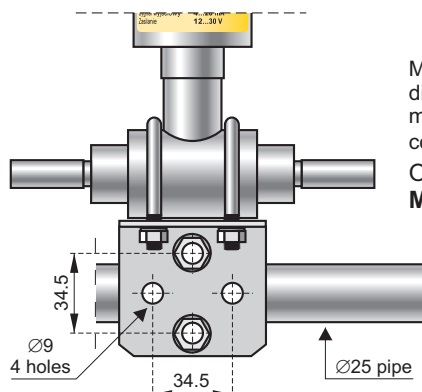
Universal mounting bracket for fitting APC-2000 and APR-2000 transmitters with aluminium casing in any desired position on a vertical or horizontal pipe (Ø30...Ø50)

Ordering code:
AL:material zincd steel
AL(SS):material stainless steel

Fitting to the transmitter casing



Mounting bracket for fitting differential pressure transmitters with C type process connections on a 2" pipe or on a wall
Ordering code:
C-2": material zincd steel
C-2"(SS): material stainless steel



Mounting bracket for fitting differential pressure transmitters with P type process connections on a Ø25 pipe.
Ordering code:
Mounting bracket FI 25