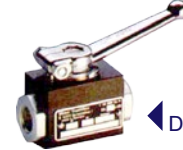
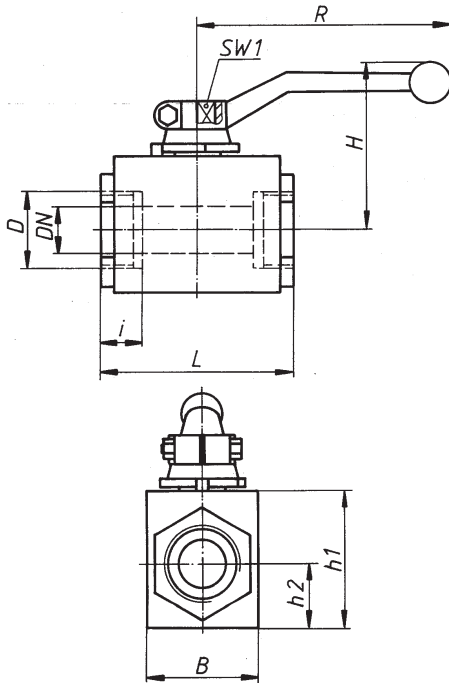


DN 12-25



DN 4-10






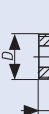




| Materials | PN | DN | Type 1 | Type 2 |
|--------------|--------|------|---------------------|---------------------|
| Body | 63-100 | 4-25 | Steel | Steel |
| Ball | 63-100 | 4-25 | Brass | Steel, hard chromed |
| Seals | 63-100 | 4-25 | NBR with steel ring | PTFE |

Please quote order-no. and type:
BMG V XXX.XXX / Type (1 o. 2)



- On request with DIN DVGW acceptance for gas.
- The handle is included.
- Ball valves with PTFE seals are normally delivered with FPM O-rings.
- Special designs upon request.

Also available with TÜV component approval

| Type of connection | DN | OD Pipe | PN | D | i | L | B | h ₁ | h ₂ | H | R | SW 1 | Mass | Order-No. |
|---|----|---------|-----------|-----------|------|-----|----|----------------|----------------|-----|-----|------|---------------|---------------|
| | mm | mm | bar | mm | mm | mm | mm | mm | mm | mm | mm | mm | kg | |
| 1  For compression fitting with ball-type nipple, DIN 7601 | 4 | - | 100 | M12 x 1,5 | 10 | 76 | 25 | 30 | 12 | 44 | 60 | 8 | 0,3 | BMG V 100.104 |
| | 6 | - | 100 | M14 x 1,5 | 10 | 76 | 25 | 30 | 12 | 44 | 60 | 8 | 0,3 | BMG V 100.106 |
| | 8 | - | 100 | M16 x 1,5 | 11 | 76 | 25 | 30 | 12 | 44 | 60 | 8 | 0,3 | BMG V 100.108 |
| | 10 | - | 100 | M18 x 1,5 | 11 | 80 | 30 | 35 | 15 | 51 | 90 | 8 | 0,4 | BMG V 100.110 |
| | 12 | - | 100 | M22 x 1,5 | 12 | 96 | 35 | 45 | 18 | 55 | 100 | 10 | 0,8 | BMG V 100.112 |
| | 16 | - | 63 | M26 x 1,5 | 12 | 105 | 40 | 50 | 21,5 | 68 | 130 | 10 | 1,0 | BMG V 063.116 |
| | 20 | - | 63 | M30 x 1,5 | 14 | 110 | 45 | 55 | 24 | 70 | 130 | 10 | 1,3 | BMG V 063.120 |
| 25 | - | 63 | M38 x 1,5 | 14 | 120 | 55 | 65 | 30,5 | 82 | 180 | 12 | 2,2 | BMG V 063.125 | |
| 2  For compression fitting, light series, DIN 2353 | 4 | 6 | 100 | M12 x 1,5 | 10 | 76 | 25 | 30 | 12 | 44 | 60 | 8 | 0,3 | BMG V 100.204 |
| | 6 | 8 | 100 | M14 x 1,5 | 10 | 76 | 25 | 30 | 12 | 44 | 60 | 8 | 0,3 | BMG V 100.206 |
| | 8 | 10 | 100 | M16 x 1,5 | 11 | 76 | 25 | 30 | 12 | 44 | 60 | 8 | 0,3 | BMG V 100.208 |
| | 10 | 12 | 100 | M18 x 1,5 | 11 | 80 | 30 | 35 | 15 | 51 | 90 | 8 | 0,4 | BMG V 100.210 |
| | 12 | 15 | 100 | M22 x 1,5 | 12 | 96 | 35 | 45 | 18 | 55 | 100 | 10 | 0,8 | BMG V 100.212 |
| | 16 | 18 | 63 | M26 x 1,5 | 12 | 105 | 40 | 50 | 21,5 | 68 | 130 | 10 | 1,0 | BMG V 063.216 |
| | 20 | 22 | 63 | M30 x 2 | 14 | 110 | 45 | 55 | 24 | 70 | 130 | 10 | 1,3 | BMG V 063.220 |
| 25 | 28 | 63 | M36 x 2 | 14 | 120 | 55 | 65 | 30,5 | 82 | 180 | 12 | 2,2 | BMG V 063.225 | |
| 3  For compression fitting, heavy series, DIN 2353 | 4 | 8 | 100 | M16 x 1,5 | 12 | 76 | 25 | 30 | 12 | 44 | 60 | 8 | 0,3 | BMG V 100.304 |
| | 6 | 10 | 100 | M18 x 1,5 | 12 | 76 | 25 | 30 | 12 | 44 | 60 | 8 | 0,3 | BMG V 100.306 |
| | 8 | 12 | 100 | M20 x 1,5 | 12 | 76 | 25 | 30 | 12 | 44 | 60 | 8 | 0,3 | BMG V 100.308 |
| | 10 | 14 | 100 | M22 x 1,5 | 14 | 80 | 30 | 35 | 15 | 51 | 90 | 8 | 0,4 | BMG V 100.310 |
| | 12 | 16 | 100 | M24 x 1,5 | 14 | 96 | 35 | 45 | 18 | 55 | 100 | 10 | 0,8 | BMG V 100.312 |
| | 16 | 20 | 63 | M30 x 2 | 16 | 105 | 40 | 50 | 21,5 | 68 | 130 | 10 | 1,0 | BMG V 063.316 |
| | 20 | 25 | 63 | M36 x 2 | 18 | 110 | 45 | 55 | 24 | 70 | 130 | 10 | 1,3 | BMG V 063.320 |
| 25 | 30 | 63 | M42 x 2 | 20 | 120 | 55 | 65 | 30,5 | 82 | 180 | 12 | 2,2 | BMG V 063.325 | |
| 4  Flat seating metric male thread, DIN 13 | 4 | - | 100 | M12 x 1,5 | 10 | 76 | 25 | 30 | 12 | 44 | 60 | 8 | 0,3 | BMG V 100.404 |
| | 6 | - | 100 | M14 x 1,5 | 10 | 76 | 25 | 30 | 12 | 44 | 60 | 8 | 0,3 | BMG V 100.406 |
| | 8 | - | 100 | M16 x 1,5 | 11 | 76 | 25 | 30 | 12 | 44 | 60 | 8 | 0,3 | BMG V 100.408 |
| | 10 | - | 100 | M18 x 1,5 | 11 | 80 | 30 | 35 | 15 | 51 | 90 | 8 | 0,4 | BMG V 100.410 |
| | 12 | - | 100 | M22 x 1,5 | 12 | 96 | 35 | 45 | 18 | 55 | 100 | 10 | 0,8 | BMG V 100.412 |
| | 16 | - | 63 | M26 x 1,5 | 12 | 105 | 40 | 50 | 21,5 | 68 | 130 | 10 | 1,0 | BMG V 063.416 |
| | 20 | - | 63 | M30 x 1,5 | 14 | 110 | 45 | 55 | 24 | 70 | 130 | 10 | 1,3 | BMG V 063.420 |
| 25 | - | 63 | M38 x 1,5 | 14 | 120 | 55 | 65 | 30,5 | 82 | 180 | 12 | 2,2 | BMG V 063.425 | |
| 5  Flat seating BSP male thread, DIN ISO 228/1 | 4 | - | 100 | G 1/8 A | 10 | 76 | 25 | 30 | 12 | 44 | 60 | 8 | 0,3 | BMG V 100.504 |
| | 6 | - | 100 | G 1/4 A | 11 | 76 | 25 | 30 | 12 | 44 | 60 | 8 | 0,3 | BMG V 100.506 |
| | 8 | - | 100 | G 3/8 A | 12 | 76 | 25 | 30 | 12 | 44 | 60 | 8 | 0,3 | BMG V 100.508 |
| | 10 | - | 100 | G 1/2 A | 12 | 80 | 30 | 35 | 15 | 51 | 90 | 8 | 0,4 | BMG V 100.510 |
| | 12 | - | 100 | G 5/8 A | 12 | 96 | 35 | 45 | 18 | 55 | 100 | 10 | 0,8 | BMG V 100.512 |
| | 16 | - | 63 | G 3/4 A | 14 | 105 | 40 | 50 | 21,5 | 68 | 130 | 10 | 1,0 | BMG V 063.516 |
| | 20 | - | 63 | G 1 A | 16 | 110 | 45 | 55 | 24 | 70 | 130 | 10 | 1,3 | BMG V 063.520 |
| 25 | - | 63 | G 1 1/4 A | 18 | 120 | 55 | 65 | 30,5 | 82 | 180 | 12 | 2,2 | BMG V 063.525 | |
| 6  NPT male thread, ANSI/ASME B 1.20.1 | 4 | - | 100 | NPT 1/8 | 9,5 | 69 | 25 | 30 | 12 | 44 | 60 | 8 | 0,3 | BMG V 100.604 |
| | 6 | - | 100 | NPT 1/4 | 14,5 | 79 | 25 | 30 | 12 | 44 | 60 | 8 | 0,3 | BMG V 100.606 |
| | 8 | - | 100 | NPT 3/8 | 14,5 | 79 | 25 | 30 | 12 | 44 | 60 | 8 | 0,3 | BMG V 100.608 |
| | 10 | - | 100 | NPT 1/2 | 19 | 90 | 30 | 35 | 15 | 51 | 90 | 8 | 0,4 | BMG V 100.610 |
| | 12 | - | 100 | NPT 1/2 | 19 | 110 | 35 | 45 | 18 | 55 | 100 | 10 | 0,8 | BMG V 100.612 |
| | 16 | - | 63 | NPT 3/4 | 19 | 112 | 40 | 50 | 21,5 | 68 | 130 | 10 | 1,0 | BMG V 063.616 |
| | 20 | - | 63 | NPT 1 | 24 | 125 | 45 | 55 | 24 | 70 | 130 | 10 | 1,4 | BMG V 063.620 |
| 25 | - | 63 | NPT 1 1/4 | 24,5 | 141 | 55 | 65 | 30,5 | 82 | 180 | 12 | 2,3 | BMG V 063.625 | |
| 7  BSP female thread, DIN ISO 228/1 | 4 | - | 100 | G 1/8 | 11 | 50 | 25 | 30 | 12 | 44 | 60 | 8 | 0,3 | BMG V 100.704 |
| | 6 | - | 100 | G 1/4 | 12,5 | 50 | 25 | 30 | 12 | 44 | 60 | 8 | 0,3 | BMG V 100.706 |
| | 8 | - | 100 | G 3/8 | 12,5 | 70 | 25 | 30 | 12 | 44 | 60 | 8 | 0,3 | BMG V 100.708 |
| | 10 | - | 100 | G 3/8 | 12,5 | 60 | 30 | 35 | 15 | 51 | 90 | 8 | 0,4 | BMG V 100.710 |
| | 12 | - | 100 | G 1/2 | 15 | 75 | 35 | 45 | 18 | 55 | 100 | 10 | 0,7 | BMG V 100.712 |
| | 16 | - | 63 | G 1/2 | 15 | 75 | 40 | 50 | 21,5 | 68 | 130 | 10 | 0,9 | BMG V 063.716 |
| | 20 | - | 63 | G 3/4 | 18 | 80 | 45 | 55 | 24 | 70 | 130 | 10 | 1,2 | BMG V 063.720 |
| 25 | - | 63 | G 1 | 20 | 90 | 55 | 65 | 30,5 | 82 | 180 | 12 | 2,1 | BMG V 063.725 | |
| 8  NPT female thread, ANSI/ASME B 1.20.1 | 4 | - | 100 | NPT 1/8 | 11 | 50 | 25 | 30 | 12 | 44 | 60 | 8 | 0,3 | BMG V 100.804 |
| | 6 | - | 100 | NPT 1/4 | 12,5 | 50 | 25 | 30 | 12 | 44 | 60 | 8 | 0,3 | BMG V 100.806 |
| | 8 | - | 100 | NPT 3/8 | 12,5 | 70 | 25 | 30 | 12 | 44 | 60 | 8 | 0,3 | BMG V 100.808 |
| | 10 | - | 100 | NPT 3/8 | 12,5 | 60 | 30 | 35 | 15 | 51 | 90 | 8 | 0,4 | BMG V 100.810 |
| | 12 | - | 100 | NPT 1/2 | 15 | 75 | 35 | 45 | 18 | 55 | 100 | 10 | 0,7 | BMG V 100.812 |
| | 16 | - | 63 | NPT 1/2 | 15 | 75 | 40 | 50 | 21,5 | 68 | 130 | 10 | 0,9 | BMG V 063.816 |
| | 20 | - | 63 | NPT 3/4 | 18 | 80 | 45 | 55 | 24 | 70 | 130 | 10 | 1,2 | BMG V 063.820 |
| 25 | - | 63 | NPT 1 | 20 | 90 | 55 | 65 | 30,5 | 82 | 180 | 12 | 2,1 | BMG V 063.825 | |